

PRIME DAILY

December 5, 2025



U.S. Stocks Finish Choppy Trading Day Little Changed, All eyes are on the RBI's MPC decision.

Wall Street's major indices closed nearly flat on Thursday as a surprisingly strong labour market report raised doubts about the pace of future Fed rate cuts. The dollar and Treasury yields rose on the data.

Amazon.com's 1.4% decline weighed on the S&P 500, limiting gains despite investor optimism ahead of next week's expected Fed rate cut.

Initial jobless claims dropped to 191,000—the lowest since September 2022—contrasting sharply with this week's weak ADP private payrolls report.

WTI crude is headed toward a 2% weekly gain on Friday, supported by anticipated Fed rate cuts, U.S.-Venezuela tensions, and stalled Moscow peace talks.

Trading remained subdued as markets awaited fresh inflation data and the December 10 FOMC decision, where a 25-basis-point cut is widely expected.

Speculation that Kevin Hassett may replace Jerome Powell as Fed chair is driving expectations of lower long-term rates. The White House economic advisor is viewed as potentially ushering in a more dovish Fed policy, aligned with President Trump's push for aggressive rate cuts.

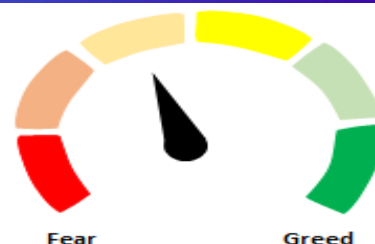
The Indian Rupee reversed its six-day losing streak, appreciating by 22 paise against the US Dollar to close at 89.97. This pullback is attributed mainly to suspected central bank intervention and to the unwinding of speculative long-dollar positions.

RBI Governor Sanjay Malhotra will announce the MPC decision at 10 AM today, with the economists divided over the likely outcome. Some are expecting a 25 basis points cut while many believe hopes of a rate cut have faded due to strong GDP growth. We believe there is room for a 25-basis-point cut, pre-empting the FOMC rate cut on 10th December.

Nifty snapped its four-session losing streak, gaining 47 points to close at 26,033 yesterday. On the Sensex weekly derivative expiry day, bulls managed to hold a slight edge.

On the downside, the recent swing low at 25,842 remains a crucial support level, while the 26,150–26,200 zone is expected to act as strong resistance.

RBI's decision will drive the markets in the short run, primarily financial stocks.



Global Equity Indices

	Close	Abs. Change	% Change
Indian Indices			
Sensex	85,265	158.5 ▲	0.19%
Nifty	26,034	47.8 ▲	0.18%
Midcap	60,300	-15.9 ▼	-0.03%
Small cap	17,608	-41.6 ▼	-0.24%
US Indices			
Dow Jones	47,851	-32.0 ▼	-0.07%
S&P 500	6,857	7.4 ▲	0.11%
Nasdaq	23,505	51.0 ▲	0.22%
European Indices			
FTSE	9,711	18.8 ▲	0.19%
DAX	23,882	188.3 ▲	0.79%
CAC	8,122	34.6 ▲	0.43%
Asian Indices			
Shanghai	3,876	-2.2 ▼	-0.06%
Hang Seng	25,936	175.2 ▲	0.68%
Nikkei	50,510	645.3 ▲	1.29%

Indices Futures

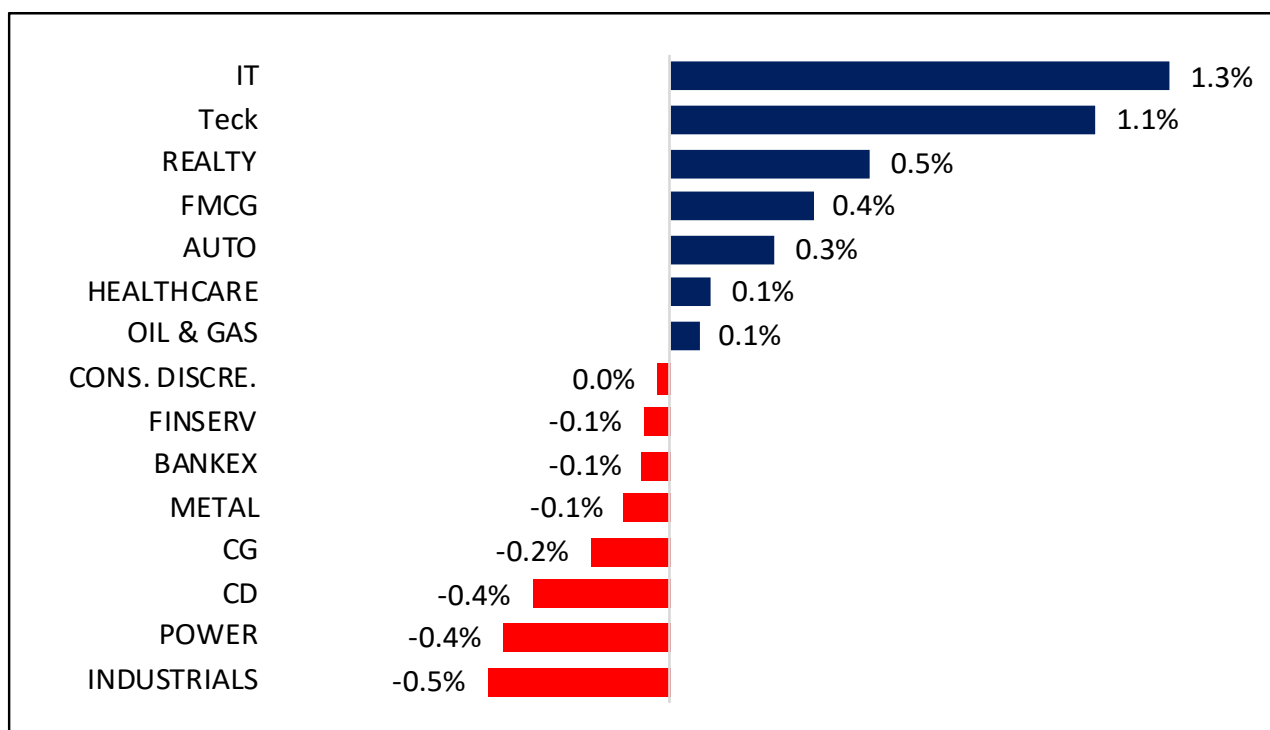
	Close	Abs. Change	% Change
IFSC Nifty			
IFSC Nifty	26,180	-2.0 ▼	-0.01%
US Indices			
Dow Jones	47,943	27.0 ▲	0.06%
S&P 500	6,878	10.8 ▲	0.16%
Nasdaq	25,696	73.3 ▲	0.29%
European Indices			
FTSE	9,738	12.6 ▲	0.13%
DAX	23,937	16.0 ▲	0.07%
Asian Indices			
Shanghai	4,528	-0.4 ▼	-0.02%
Hang Seng	25,880	-33.5 ▼	-0.13%
Nikkei	50,335	-222.5 ▼	-0.44%

Nifty50 Index Contributors

Top Five (Positive Contributors)		
Stock	Points	% Change
INFY	14.9	0.06
TCS	11.0	0.04
BHARTIARTL	10.6	0.04
AXISBANK	5.8	0.02
ITC	5.4	0.02

Bottom Five (Negative Contributors)		
Stock	Points	% Change
HDFCBANK	-11.1	-0.04
INDIGO	-7.6	-0.03
ICICIBANK	-7.5	-0.03
RELIANCE	-4.8	-0.02
KOTAKBANK	-3.5	-0.01

BSE Sectoral Leaders & Laggards

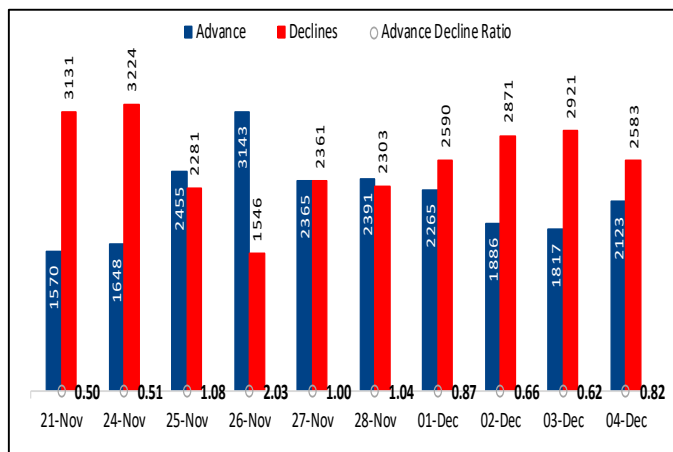


Nifty50 Index Top Pops & Drops

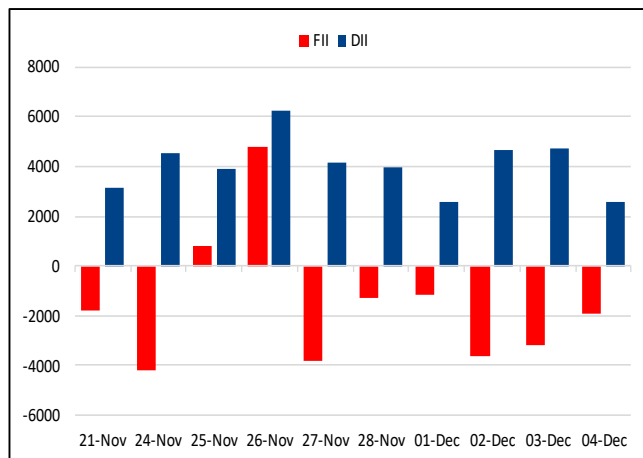
Nifty50 Top Five Gainers			
Symbol	LTP	% Change	Volume
INDIGO	5461.5	-2.39	41,18,078
RELIANCE	1525.3	-0.88	1,18,67,930
HINDALCO	811	-0.65	33,81,601
MARUTI	15979	-0.64	2,48,812
TITAN	3794	-0.62	7,76,693

Nifty50 Top Five Losers			
Symbol	LTP	% Change	Volume
TECHM	1565	1.51	24,22,663
HDFCLIFE	763.15	1.49	26,49,259
TCS	3227	1.48	50,25,905
SBILIFE	2000.7	1.41	6,60,360
BEL	409	1.25	1,08,65,110

BSE Advance & Declines



Institutional Activities



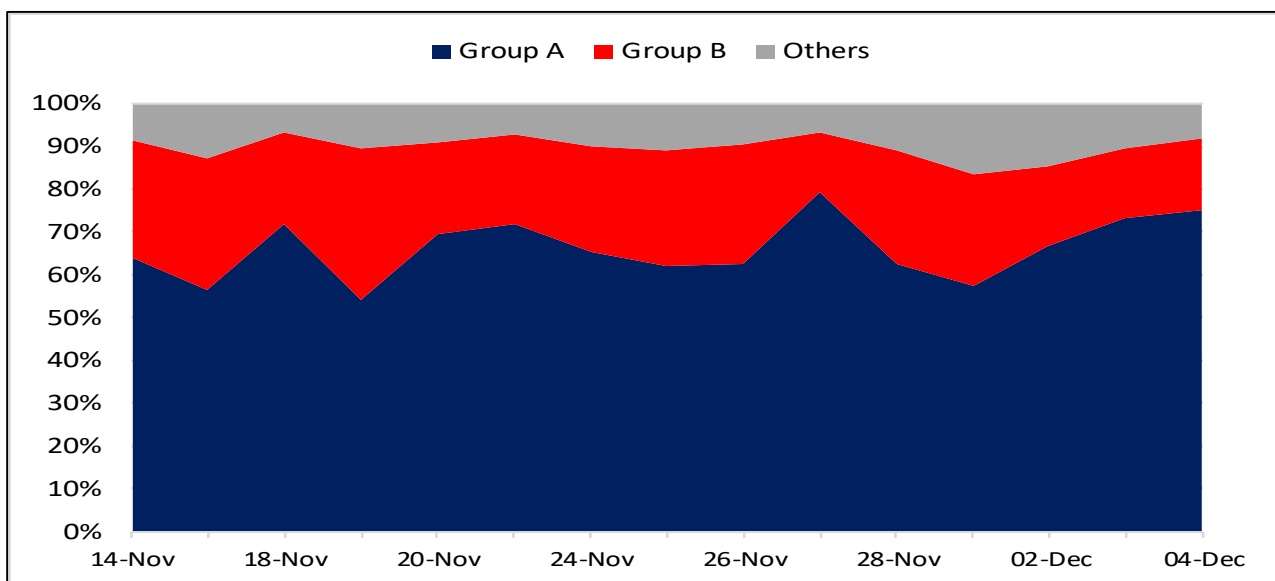
52 Week High Stocks

	04-Dec-25	03-Dec-25
BSE Universe	126	129
BSE Group A Stocks Hitting 52 Week High		
Stocks	Price	52 Week High
ANURAS	1250.2	1272.95
ASIANPAINT	2957.15	2985.5
HEROMOTOCO	6340.75	6351.85
HINDCOPPER	365.4	368
JKTYRE	473.85	477




52 Week Low Stocks

	04-Dec-25	03-Dec-25
BSE Universe	274	305
BSE Group A Stocks Hitting 52 Week Low		
Stocks	Price	52 Week Low
BAJAJELEC	479.2	477.05
BASF	4067.75	4041
BATAINDIA	960.1	958.5
CHAMBLFERT	433.4	429.85
CHEMPLASTS	274.05	273

BSE Cash Market Turnover Participant-wise



News Highly Sensitive to Stock Price

Impact	Stock	News
	Zen Technologies	<p>Company has received orders, aggregating to Rs 120 crore (including GST), for supply of Comprehensive Training Node (CTN) comprising of a suite of various training simulators and equipment, from Ministry of Defence, Government of India.</p> <p>The order will be executed within the next 12 months.</p>
	Effwa Infra	<p>Company has Secured Manufacture, Supply, Supervision Services and Operation and Maintenance of Common Effluent Treatment Plant (ZLD) in Phase-III at JSW Steel Limited, Dolvi Valued at Over Rs 313.4 crore plus 18% GST. It is to be executed over the next 20 months.</p>
	ITC Hotels	<p>British American Tobacco (BAT) to offload shares worth nearly Rs 3,000 crore in ITC Hotels at a floor price of Rs 205.65 via large deals. BAT via affiliates intend to sell between 7% and 15.3% stake in ITC Hotels to investors. BAT currently holds a 15.3% stake in ITC Hotels. BAT held a 22.9% stake in ITC as of September. ITC owns 39.85% in ITC Hotels.</p>

Stock	News
Transformers and Rectifiers	<p>Company announced that it has secured an order worth Rs 53.33 crore from Power Grid Corporation of India for HVDC converter transformers and related works.</p> <p>The order involves the repair, erection, testing, and commissioning of a 397 MVA HVDC converter transformer, with delivery scheduled by the next financial year.</p>
TCS	<p>OpenAI and Tata Consultancy Services (TCS) are in advanced discussions to build AI compute infra in India and co-develop agentic AI solutions for businesses. In addition, the deal will also quicken TCS' push to become the "largest AI-led services company" in the world.</p>
Ratnaveer Precision Engineering	<p>Company issued and allotted 1.28 crore equity shares at Rs 145 per share. It has raised Rs 185.49 crore through the said allotment (QIB route).</p>
RailTel Corp.	<p>Company has received the Work Order from Central Public Works Department (Cpwd) worth Rs 63.93 crore.</p>
Lupin Ltd.	<p>Lupin Limited announced that it has entered into an exclusive licensing agreement with Valorum Biologics (Valorum), a biosimilar specialist in the U.S., for its biosimilar Armlupeg (pegfilgrastim-unne). Under the terms of the agreement, Valorum will advance the commercialization and distribution of Armlupeg (pegfilgrastim-unne) in the US. Lupin will be responsible for manufacturing and supply of the product and will receive an upfront license fee and a royalty payment on net sales.</p>
BEML	<p>BEML Limited has secured an order for manufacturing of Switch Rail Grinding Machines valued at Rs 157 crore from M/s Loram Rail Maintenance India Private Limited. These machines will be supplied to Indian Railways for Track Maintenance.</p>
Diamond Power	<p>Company has received a letter of intent from Adani Green Energy Limited for Supply of 33KV HV Cables 2126 kms and 3.3KV Solar MV Cables 3539 Kms for Khavda and Rajasthan Project worth Rs 747.64 crore.</p>
Mahindra & Mahindra	<p>Mahindra & Mahindra announced a significant divestment. Its subsidiary, Mahindra Overseas Investment Company (Mauritius) Ltd, has sold a 3.58% stake in CIE Automotive S.A. This transaction brought in approximately 119 million euros. CIE Automotive S.A is an associate of the subsidiary.</p>

Stock	News
RNIT AI Solutions	<p>Company said that it has executed an agreement with Department of Legal Metrology, Government of Andhra Pradesh. RNIT AI Solutions Limited has secured a new project under its e-governance portfolio, marking the Company's first engagement with the Legal Metrology Department. Under this Agreement, RNIT will implement an AI-driven digital platform suite aimed at modernizing departmental operations through comprehensive digitization. The project is valued in the range of Rs 1 crore to Rs 10 crore (incl. GST).</p>
Excelsoft Tech	<p>Excelsoft Technologies and AQA, a leading UK-based exam board announced the creation of a joint AI taskforce to collaborate on research and development projects focused on the ethical and secure use of AI in the e-marking of handwritten student responses. For the foreseeable future, marking exams will remain a human process. This joint AI taskforce will combine AQA's deep expertise in high-stakes assessment with Excelsoft's advanced AI, data and e-assessment capabilities. The collaboration will focus on designing and testing responsible AI models and workflows.</p>
Panama Petrochem	<p>Company has received approval from the Development Commissioner for setting up of a EOU Unit at Plot No. B6, Lodha Industrial and Logistic Park II, Palava, Village Nahren, Taloja Bypass Road, Taluka Ambernath, District-Thane, Maharashtra.</p>
Indusind Bank	<p>IndusInd Bank has denied reports of talks with a strategic partner. The bank clarified that no such discussions are underway. Earlier, UK-based Hinduja Group, its top shareholder, was reported to be seeking a global partner for a minority stake.</p>
Tata Power	<p>The company expects all units of Mundra Thermal Plant to remain suspended until 31st December 2025.</p>

Key Events

US weekly jobless claims dive to a more than three-year low

The number of Americans filing new applications for unemployment benefits fell to a more than three-year low last week, allaying fears of a sharp deterioration in labor market conditions after independent surveys showed job losses in November.

Difficulties adjusting the weekly jobless claims data around the Thanksgiving holiday could have accounted for some of the unexpected decline reported by the Labor Department.

Revelio Labs, which develops monthly employment estimates from online employment profiles and other information, said the economy lost 9,000 jobs in November. That was on the heels of the ADP employment report showing private payrolls decreased last month by the most in more than 2-1/2 years.

Seasonally-adjusted initial jobless claims came in at 191,000 in the week ending on November 29, according to Labor Department data. It was a decrease of 27,000 from an upwardly-revised level of 218,000 in the prior week, and the lowest mark since September 2022.

Economists had predicted a reading of 219,000.

Natural gas storage dips slightly, failing to meet forecasted expectations

In a recent report by the Energy Information Administration (EIA), the Natural Gas Storage data revealed a decline, reflecting changes in the energy sector. The report measures the change in the number of cubic feet of natural gas held in underground storage during the past week.

The actual number reported was a decrease of 12 billion cubic feet of natural gas. This figure fell short when compared to the forecasted decrease of 18 billion cubic feet, suggesting that the demand for natural gas was weaker than initially anticipated.

Canada's Ivey PMI shows activity contracting in November as employment falls

Canadian economic activity contracted in November for the first time in six months as a measure of employment declined, Ivey Purchasing Managers Index (PMI) data showed.

The seasonally adjusted index fell to 48.4 last month from 52.4 in October, marking the first move below the 50 threshold since May.

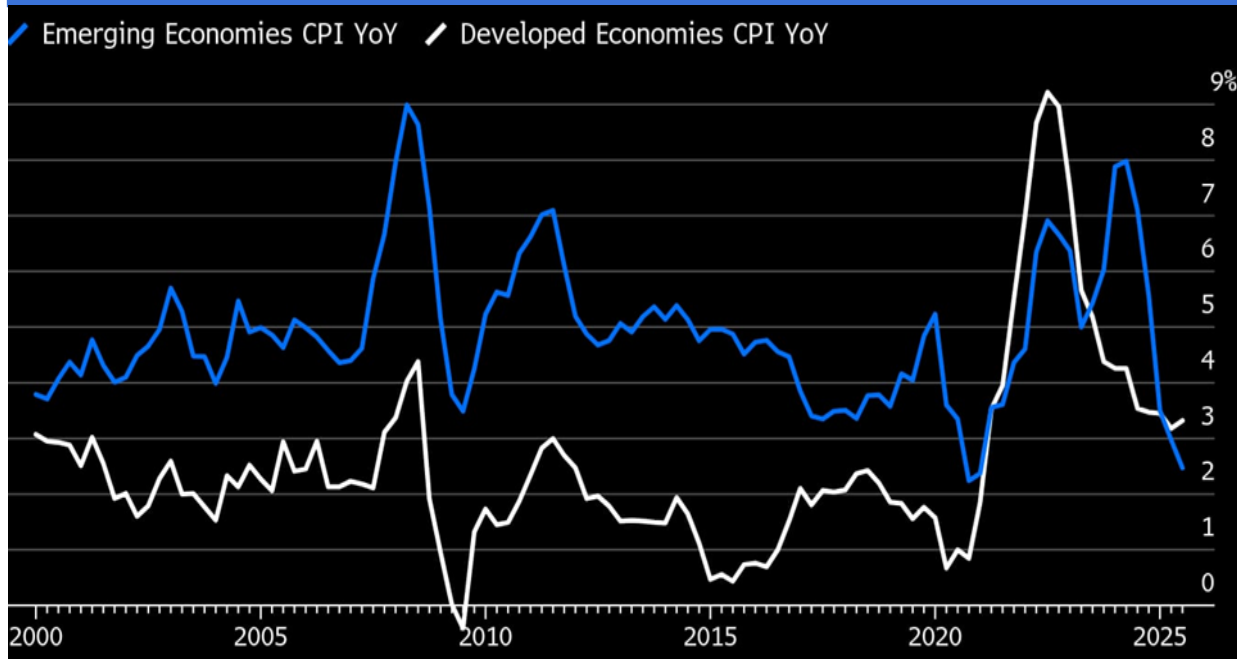
The Ivey PMI measures the month to month variation in economic activity as indicated by a panel of purchasing managers from across Canada. A reading below 50 indicates a decrease in activity.

Chart with Interesting Observations

EMs Have Lower Inflation Than Developed Nations

- As the final central bank meetings of 2025 approach, the proactive response of emerging markets (EMs) to post-pandemic inflation continues to yield positive results
- Strikingly, and in contrast to historical trends, the average inflation rate in emerging economies is now marginally lower than in the developed world, where price acceleration is resuming.
- Furthermore, EM currencies have performed impressively against a year-long weak dollar. Using JPMorgan's benchmark, they currently sit at their strongest level since June 2024, easing the burden of dollar-denominated debt financing.
- For developed markets, the belated reaction to inflation is further complicated by the uncertainty of US tariff policy, making the Federal Reserve's path for reducing high rates uniquely challenging

Emerging Economies vs Developed Economies CPI YoY



Source: Bloomberg

Nifty : Fresh Break Down Below 25900; Strong Resistance Band 26150-26200



Nifty Capital Market Index : Fresh Break Down; Expect More Downside



F&O Highlights

SHORT COVERING UP WAS SEEN IN NIFTY FUTURES

Create longs with the SL of 26000 levels.

- Nifty snapped its four-session losing streak, gaining 47 points to close at 26,033. On the Sensex weekly derivative expiry day, bulls managed to hold a slight edge. NSE cash market turnover fell 5% compared to yesterday.
- Short Covering was seen in the Nifty Futures where Open Interest fell by 0.36% with Nifty rising by 0.18%.
- Short Build-Up was seen in the Bank Nifty Futures where Open Interest rose by 5.22% with Bank Nifty falling by 0.10%.
- Nifty Open Interest Put Call ratio rose to 0.92 levels from 0.85 levels.
- Amongst the Nifty options (09-Dec Expiry), Call writing is seen at 26200-26300 levels, indicating Nifty is likely to find strong resistance in the vicinity of 26200-26300 levels. On the lower side, an immediate support is placed in the vicinity of 26000-25900 levels where we have seen Put writing.
- Short build-up was seen by FII's in the Index Futures segment where they net sold worth 1,798 cr with their Open Interest going up by 5511 contracts.

Index	Expected Trend	Prev. Close	Buy/Sell	Stop Loss	Target
NIFTY FUT	UP	26186.50	BUY AROUND 26100	26000	26250
BANK NIFTY FUT	UP	59643.20	BUY AROUND 59500	59250	60000

Nifty 50 Snapshot			
	04-Dec-25	03-Dec-25	% Chg.
Nifty Spot	26033.75	25986.00	0.18
Nifty Futures	26186.50	26136.20	0.19
Premium/ (Discount)	152.75	150.20	N.A.
Open Interest (OI)	1.64	1.65	-0.36
Nifty PCR	0.92	0.85	8.68

Bank Nifty Snapshot			
	04-Dec-25	03-Dec-25	% Chg.
Bank Nifty Spot	59288.70	59348.25	-0.10
Bank Nifty Futures	59643.20	59737.00	-0.16
Premium/ (Discount)	354.50	388.75	N.A.
Open Interest (OI)	0.18	0.17	5.22
Bank Nifty PCR	0.94	1.00	-6.24

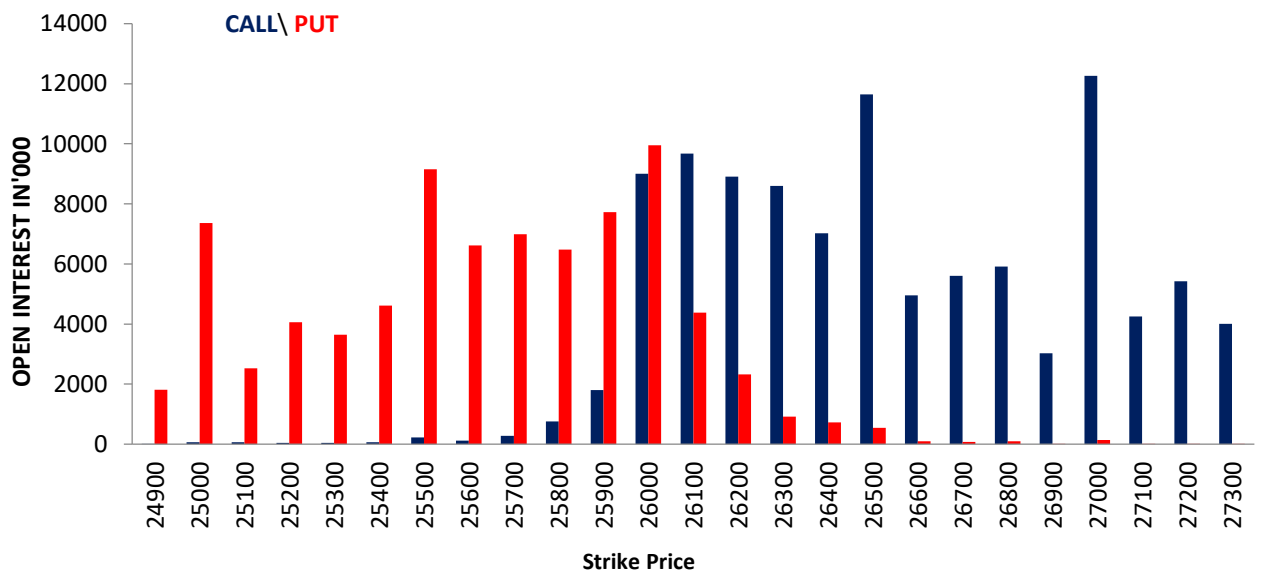
Nifty Options Highest OI (Weekly)			
CALL		PUT	
Strike Price	Open Interest (Contracts)	Strike Price	Open Interest (Contracts)
27000	163489	26000	132664

FII Activity on 04 Dec 2025

	BUY		SELL		NET	OPEN INTEREST	
	Contracts	Value (Rs Cr)	Contracts	Value (Rs Cr)	(Rs Cr)	Contracts	Value (Rs Cr)
Index Futures	6379	1262	15440	3060	-1798	163382	31959
Nifty Futures	4048	787	9773	1892	-1105	123756	24019
Bank Nifty Fut.	1892	391	5011	1041	-650	23121	4742
Index Options	4819526	939269	4846000	944879	-5609	2068063	404668
Nifty Options	4692092	913059	4718410	918637	-5579	1805549	351278
Bank Nifty Opt.	96835	20222	95721	19990	233	224078	46027
Stock Futures	240830	16492	207665	14600	1893	5784574	391471
Stock Options	252350	18098	256143	18468	-370	355689	24049

FII's Open Interest (Contracts)

Date	Index Futures	Nifty Futures	Bank Nifty Futures	Index Options	Nifty Options	Bank Nifty Options	Stock Futures	Stock Options
04-Dec-25	163382	123756	23121	2068063	1805549	224078	5784574	355689
03-Dec-25	157871	118121	23788	1945293	1693557	219264	5784979	343053
NET (CONTRACTS)	5511	5635	-667	122770	111992	4814	-405	12636

Nifty Weekly (09 – Dec) Option Open Interest Distribution


Top Gainers OI Wise		
Company	Future OI (%)	Price (%)
KAYNES	16.79	-6.20
LODHA	11.33	0.51
SHRIRAMFIN	9.12	0.01
BIOCON	7.28	-5.28
INDIGO	6.37	-2.84

Top Losers OI Wise		
Company	Future OI (%)	Price (%)
HINDUNILVR	-21.97	0.58
CAMS	-10.55	2.52
BOSCHLTD	-5.84	0.72
POLICYBZR	-3.85	0.83
OFSS	-3.21	1.44

Top Gainers Price Wise		
Company	Future OI (%)	Price (%)
PETRONET	2.02	4.54
BDL	-2.94	3.03
COFORGE	1.21	2.81
CAMS	-10.55	2.52
HFCL	-1.35	2.43

Top Losers Price Wise		
Company	Future OI (%)	Price (%)
POWERINDIA	1.20	-8.08
KAYNES	16.79	-6.20
BIOCON	7.28	-5.28
PATANJALI	-0.76	-4.76
AMBER	0.81	-3.94

Long Buildup		
Company	Future OI (%)	Price (%)
LODHA	11.33	0.51
SHRIRAMFIN	9.12	0.01
MANKIND	4.25	0.03
ADANIENT	3.68	1.28
HDFCLIFE	3.56	1.18

Short Buildup		
Company	Future OI (%)	Price (%)
KAYNES	16.79	-6.20
BIOCON	7.28	-5.28
INDIGO	6.37	-2.84
SBIN	5.64	-0.31
MUTHOOTFIN	4.91	-1.63

Long Unwinding		
Company	Future OI (%)	Price (%)
HUDCO	-2.65	-1.36
DRREDDY	-2.06	-0.24
TITAGARH	-1.83	-0.69
TORNTPOWER	-1.69	-0.19
HINDZINC	-1.49	-1.52

Short Covering		
Company	Future OI (%)	Price (%)
HINDUNILVR	-21.97	0.58
CAMS	-10.55	2.52
BOSCHLTD	-5.84	0.72
POLICYBZR	-3.85	0.83
OFSS	-3.21	1.44

Securities In Ban For Trade – 05.12.2025

No.	Company Name
1.	BANDHANBNK
2.	SAMMAANCAP

Economic Calendar

Friday	Monday	Tuesday	Wednesday	Thursday
05 Dec	08 Dec	09 Dec	10 Dec	11 Dec
India: RBI Monetary Policy Japan: Leading Index EU: GDP US: Uni. Of Mich. Sentiments	Japan, GDP, Trade Balance China: Trade Balance	US: JOLTs Job Opening	China: CPI, MBA Mortgage US: FOMC Monetary Policy	US: Initial & Continuing Claims

Open Derivatives Trading Calls

NO	RECO DT	RECO	COMPANY NAME	BUY RANGE	CMP	SL	TARGET	UPSIDE %	VALID TILL
1	4-DEC-25	SELL	BANK NIFTY DEC FUT	59618-59850	59647.2	59950	59100	0.9	9-DEC-25
2	3-DEC-25	BUY	MIDCAP NIFTY 30TH DEC 13800 PUT OPTION	186	157.4	130	250	58.8	8-DEC-25
3	4-DEC-25	BUY	NIFTY 9TH DEC 26050 CALL OPTION	117.8	112	82	177	58.0	9-DEC-25
4	28-NOV-25	SELL	POWERGRID JAN FUT	274.65-278	272.2	282	250	8.2	30-DEC-25
5	3-DEC-25	SELL	BEL DEC FUT	405.35-412	411.8	417	385	6.5	17-DEC-25
6	4-DEC-25	BUY	CONCOR DEC FUT	514.5-503	515.95	495	541	4.9	18-DEC-25
7	4-DEC-25	BUY	INDUSIND BANK DEC FUT	873-851	867	842	916	5.7	18-DEC-25

Open Short-Term MTF Calls

NO.	RECO DT.	RECO	COMPANY NAME	BUY RANGE	CMP	Lower Band	SL	TARGET	UPSIDE %	VALID TILL
1	7-NOV-25	BUY	M&M	3701-3720	3671.6	3626	3564	3904	6.3	9-DEC-25
2	19-NOV-25	BUY	SONA COMS	505-508	499.65	494	485	535	7.1	10-DEC-25
3	4-DEC-25	BUY	HAPPIEST MIND	510.40-516	511.05	499	490	540	5.7	18-DEC-25
4	4-DEC-25	BUY	INFOEDGE	1394-1398	1396.2	1345	1330	1471	5.4	25-DEC-25

Open Positional MTF Calls

NO.	RECO DT.	RECO	COMPANY NAME	BUY RANGE	CMP	SL	TARGET 1	TARGET 2	UPSIDE %	VALID TILL
1	3-OCT-25	BUY	NELCO	896-887.45	828.8	820.0	978.0	1060	28	31-DEC-25
2	20-OCT-25	BUY	CENTRAL BANK	39.50-38.95	37.06	35.9	43.0	47	27	19-DEC-25
3	17-NOV-25	BUY	TATA COMM	1905-1893	1846.8	1780.0	2025.0	2150	16	1-JAN-26
4	19-NOV-25	BUY	IDBI	104-105.50	97.64	95.5	114.0	119	22	18-JAN-26
5	20-NOV-25	BUY	PSUBNKBEEES	95.69-96.70	92.03	91.5	100.5	104	12	18-FEB-26
6	27-NOV-25	BUY	SANDUR MANGANESE	217-214.97	205.87	198.0	237.0	255	24	26-JAN-26
7	28-NOV-25	BUY	KOTAK BANK	2126-2135	2135.4	1990.0	2270.0	2340	10	12-JAN-26

*= 1st Target Achieved

NSE 200 SUPPORT & RESISTANCE

SYMBOL	CLOSE	PIVOT	SUPT 2	SUPT 1	RESI 1	RESI 2	52 W H	52 W L	30 D % CHG	365 D % CHG
360ONE	1127.9	1146.5	1082.6	1105.3	1169.2	1210.4	1318.0	790.5	3.14	-2.49
ABB	5172.5	5149.8	5062.8	5117.7	5204.7	5236.8	7960.0	4684.5	-1.59	-31.38
ABCAPITAL	349.4	349.4	346.1	347.8	351.0	352.6	360.2	149.0	4.53	75.16
ACC	1815.2	1822.4	1786.5	1800.8	1836.7	1858.3	2314.9	1778.5	-2.96	-20.79
ADANIENSOL	971.7	972.2	958.5	965.1	978.8	985.8	1050.0	639.5	-2.30	21.18
ADANIENT	2217.9	2211.0	2162.7	2190.3	2238.6	2259.3	2616.5	1967.5	-10.10	-11.79
ADANIGREEN	1013.4	1015.8	995.5	1004.4	1024.7	1036.1	1365.0	758.0	-8.31	-22.81
ADANIPORTS	1505.6	1501.6	1482.7	1494.2	1513.1	1520.5	1549.0	1010.8	4.22	16.84
ADANIPOWER	142.7	144.0	139.4	141.1	145.6	148.5	182.7	89.0	-8.93	-73.77
ALKEM	5659.0	5663.2	5608.7	5633.8	5688.3	5717.7	5868.0	4491.7	0.54	0.38
AMBUJACEM	536.9	536.0	520.1	528.5	544.4	551.9	625.0	455.0	-6.98	-5.23
APLAPOLLO	1772.9	1767.2	1743.9	1758.4	1781.7	1790.5	1936.0	1272.7	-1.30	13.88
APOLLOHOSP	7201.0	7195.5	7126.0	7163.5	7233.0	7265.0	8099.5	6001.0	-7.97	1.04
ASHOKLEY	160.2	161.2	157.6	158.9	162.5	164.8	164.5	95.9	14.57	-31.88
ASIANPAINT	2957.2	2959.0	2907.3	2932.2	2983.9	3010.7	2985.7	2124.8	17.71	19.75
ASTRAL	1440.7	1430.7	1388.4	1414.6	1456.9	1473.0	1867.0	1232.3	-2.70	-21.94
ATGL	593.0	593.7	587.8	590.4	596.3	599.6	798.0	532.6	-5.35	-22.61
AUBANK	948.8	948.8	938.5	943.6	954.0	959.2	966.9	478.4	9.44	59.49
AUROPHARMA	1223.1	1219.7	1202.0	1212.5	1230.2	1237.4	1356.2	1010.0	5.57	-3.26
AXISBANK	1280.0	1277.4	1264.0	1272.0	1285.4	1290.8	1304.0	933.5	3.75	10.30
BAJAJ-AUTO	9085.0	9056.0	8949.0	9017.0	9124.0	9163.0	9490.0	7089.4	1.82	-0.84
BAJAJFINSV	2049.2	2048.4	2020.5	2034.8	2062.7	2076.3	2195.0	1551.7	-1.56	27.51
BAJAJHFL	96.3	96.3	94.1	95.2	97.4	98.5	147.7	95.0	-12.37	-29.46
BAJAJHLDNG	11118.0	11192.3	10893.3	11005.7	11304.7	11491.3	14763.0	10245.1	-8.32	4.07
BAJFINANCE	1029.1	1025.8	1009.5	1019.3	1035.6	1042.1	1102.5	663.1	-1.34	-84.58
BANKBARODA	288.2	287.9	283.5	285.9	290.2	292.2	304.0	190.7	-1.03	13.22
BANKINDIA	141.5	141.3	138.3	139.9	142.9	144.4	151.4	90.1	-0.43	24.12
BDL	1528.0	1516.6	1460.5	1494.3	1550.4	1572.7	2096.6	907.0	-0.56	32.62
BEL	407.2	406.1	398.4	402.8	410.5	413.9	436.0	240.3	-3.59	30.45
BHARATFORG	1394.3	1401.1	1371.5	1382.9	1412.5	1430.7	1460.2	919.1	4.00	3.25
BHARTIARTL	2103.8	2095.5	2061.1	2082.4	2116.8	2129.9	2174.5	1559.5	1.44	29.82
BHARTIHEXA	1764.9	1763.2	1719.2	1742.1	1786.1	1807.2	2052.9	1234.0	-5.48	27.15
BHEL	275.8	276.6	271.4	273.6	278.7	281.7	295.3	176.0	4.08	9.27
BIOCON	388.4	394.8	367.2	377.8	405.3	422.3	425.0	291.0	2.97	3.88
BLUESTARCO	1752.4	1749.5	1723.5	1737.9	1763.9	1775.5	2417.0	1521.0	-9.41	-6.50
BOSCHLTD	36845.0	36888.3	36208.3	36526.7	37206.7	37568.3	41945.0	25921.6	-0.49	5.50
BPCL	356.0	357.0	348.9	352.5	360.6	365.1	381.6	234.0	-3.08	20.99
BRITANNIA	5876.5	5861.2	5803.2	5839.8	5897.8	5919.2	6336.0	4506.0	0.96	19.69
BSE	2765.0	2768.7	2713.7	2739.3	2794.3	2823.7	3030.0	1227.3	8.50	-38.74
CANBK	147.4	147.3	144.4	145.9	148.9	150.3	154.2	78.6	5.58	40.21
CGPOWER	662.4	663.1	655.0	658.7	666.8	671.3	811.4	517.7	-11.14	-13.00
CHOLAFIN	1675.7	1668.5	1640.7	1658.2	1686.0	1696.3	1782.0	1168.0	-2.49	33.67
CIPLA	1521.0	1516.6	1494.0	1507.5	1530.1	1539.2	1673.0	1335.0	0.63	-0.84
COALINDIA	379.1	377.5	371.6	375.3	381.3	383.5	425.9	349.3	-2.44	-10.20
COCHINSHIP	1640.4	1634.1	1600.1	1620.3	1654.3	1668.1	2545.0	1180.2	-8.20	-2.68
COFORGE	1966.2	1956.7	1888.5	1927.3	1995.5	2024.9	2005.4	1194.0	9.55	-77.45
COLPAL	2138.1	2125.0	2080.4	2109.3	2153.9	2169.6	2975.0	2096.2	-2.83	-26.18
CONCOR	512.7	511.4	502.8	507.7	516.4	520.1	692.8	481.0	-6.76	-38.95
COROMANDEL	2303.5	2303.8	2275.8	2289.7	2317.7	2331.8	2718.9	1596.0	7.43	29.59
CUMMINSIND	4459.3	4480.6	4358.1	4408.7	4531.2	4603.1	4574.0	2580.0	1.82	26.96

NSE 200 SUPPORT & RESISTANCE

SYMBOL	CLOSE	PIVOT	SUPT 2	SUPT 1	RESI 1	RESI 2	52 W H	52 W L	30 D % CHG	365 D % CHG
DABUR	508.1	507.0	499.3	503.7	511.4	514.7	577.0	433.3	0.95	-2.77
DIVISLAB	6469.0	6458.2	6378.7	6423.8	6503.3	6537.7	7071.5	4955.0	-4.92	4.16
DIXON	13707.0	13829.0	13399.0	13553.0	13983.0	14259.0	19148.9	12202.2	-11.48	-18.73
DLF	709.4	709.5	700.8	705.1	713.8	718.2	896.6	601.2	-8.73	-16.25
DMART	3913.3	3915.2	3877.5	3895.4	3933.1	3952.9	4949.5	3340.0	-5.84	2.18
DRREDDY	1277.6	1276.1	1258.4	1268.0	1285.7	1293.8	1405.9	1020.0	6.82	4.34
EICHERMOT	7100.0	7111.3	7010.3	7055.2	7156.2	7212.3	7284.5	4646.0	1.09	46.56
ENRIN	3100.7	3126.9	3026.9	3063.8	3163.8	3226.9	3625.0	2508.8	-3.29	-
ETERNAL	295.8	295.7	289.5	292.6	298.8	301.9	368.5	194.8	-8.32	-
EXIDEIND	380.4	377.9	367.9	374.1	384.2	388.0	472.5	328.0	-0.77	-16.51
FEDERALBNK	258.7	259.0	254.8	256.7	260.9	263.1	262.0	172.7	8.73	23.19
FORTIS	888.6	891.2	875.1	881.8	898.0	907.4	1104.3	577.0	-13.79	26.89
GAIL	170.6	170.8	168.6	169.6	171.8	172.9	213.4	150.5	-7.11	-14.68
GLENMARK	1973.8	1972.9	1948.1	1961.0	1985.8	1997.7	2284.8	1275.5	3.97	26.57
GMRAIRPORT	103.1	103.9	100.9	102.0	105.0	106.9	110.4	67.8	10.22	-
GODFRYPHLP	2780.7	2792.5	2731.7	2756.2	2817.0	2853.3	3947.0	1370.8	-10.54	-51.23
GODREJCP	1132.6	1128.9	1105.9	1119.2	1142.2	1151.9	1309.0	979.5	-3.90	-7.95
GODREJPROP	2079.6	2079.5	2032.5	2056.1	2103.1	2126.5	3015.0	1900.0	-9.88	-27.35
GRASIM	2730.4	2727.6	2695.1	2712.8	2745.3	2760.1	2977.8	2277.0	-5.85	0.60
HAL	4496.8	4481.4	4378.7	4437.7	4540.4	4584.1	5165.0	3046.1	-4.22	-0.49
HAVELLS	1433.5	1428.4	1408.8	1421.1	1440.7	1448.0	1782.7	1381.3	-4.26	-18.42
HCLTECH	1654.6	1657.2	1630.3	1642.5	1669.4	1684.1	2012.2	1302.8	7.20	-12.49
HDFCAMC	2596.0	2596.1	2570.5	2583.3	2608.9	2621.7	2967.3	1781.5	-51.97	-39.04
HDFCBANK	997.2	998.3	986.6	991.9	1003.6	1010.0	1020.5	812.2	0.46	-45.40
HDFCLIFE	760.8	757.3	736.5	748.7	769.5	778.1	820.8	584.3	3.37	20.00
HEROMOTOCO	6340.0	6310.2	6198.7	6269.3	6380.8	6421.7	6351.0	3344.0	14.46	34.98
HINDALCO	810.8	815.4	798.1	804.5	821.7	832.6	864.0	546.5	-4.30	21.46
HINDPETRO	448.0	448.9	440.2	444.1	452.8	457.7	494.5	287.6	-7.47	16.49
HINDUNILVR	2462.2	2456.1	2396.3	2429.3	2489.1	2515.9	2750.0	2136.0	0.09	-0.83
HINDZINC	496.8	499.4	484.4	490.6	505.6	514.4	546.8	378.2	3.35	-2.05
HUDCO	222.3	223.1	217.2	219.8	225.7	229.0	262.7	158.9	-6.32	-5.61
HYUNDAI	2372.8	2378.6	2337.7	2355.2	2396.1	2419.5	2890.0	1541.7	-2.25	28.31
ICICIBANK	1386.7	1386.1	1374.4	1380.5	1392.2	1397.8	1500.0	1186.0	2.99	5.98
ICICIGI	1983.0	1976.4	1943.4	1963.2	1996.2	2009.4	2068.7	1613.7	-1.23	4.57
IDEA	10.7	10.5	9.9	10.3	10.9	11.1	11.1	6.1	11.95	30.09
IDFCFIRSTB	79.9	80.2	79.0	79.4	80.6	81.3	82.7	52.5	-2.57	22.52
IGL	193.7	193.7	190.3	192.0	195.4	197.2	229.0	170.5	-9.97	-46.38
INDHOTEL	729.6	732.1	722.5	726.0	735.7	741.8	894.9	672.6	-2.36	-9.56
INDIANB	802.6	807.4	788.9	795.7	814.2	825.9	894.9	473.9	-8.83	38.40
INDIGO	5436.5	5468.8	5292.8	5364.7	5540.7	5644.8	6232.5	3945.0	-4.55	23.40
INDUSINDBK	863.0	859.6	829.5	846.3	876.4	889.7	1086.6	606.0	8.29	-13.56
INDUSTOWER	402.0	402.9	393.2	397.6	407.3	412.6	430.0	312.6	5.03	13.59
INFY	1597.6	1588.2	1557.2	1577.4	1608.4	1619.2	2006.5	1307.0	7.55	-15.56
IOC	162.8	163.2	160.5	161.6	164.3	165.8	174.5	110.7	-2.96	16.67
IRB	43.0	42.9	42.2	42.6	43.3	43.6	62.0	40.5	-4.82	-21.86
IRCTC	673.9	675.0	664.8	669.3	679.5	685.2	859.7	656.0	-6.86	-18.99
IREDA	136.8	137.3	134.8	135.8	138.3	139.8	234.3	136.2	-10.80	-33.84
IRFC	114.9	115.1	113.6	114.2	115.7	116.6	166.9	108.0	-6.70	-22.50
ITC	403.1	401.9	397.4	400.2	404.7	406.4	491.0	390.2	-2.63	-14.71
ITCHOTELS	207.7	207.5	205.0	206.4	208.8	209.9	261.6	155.1	-4.14	-

NSE 200 SUPPORT & RESISTANCE

SYMBOL	CLOSE	PIVOT	SUPT 2	SUPT 1	RESI 1	RESI 2	52 W H	52 W L	30 D % CHG	365 D % CHG
JINDALSTEL	1005.8	1012.4	987.1	996.4	1021.7	1037.7	1098.0	723.4	-6.61	8.64
JIOFIN	302.3	301.9	298.5	300.4	303.8	305.4	347.4	198.7	-1.48	-11.19
JSWENERGY	459.9	463.7	448.3	454.1	469.5	479.1	700.9	418.8	-13.71	-28.48
JSWSTEEL	1150.6	1152.9	1131.0	1140.8	1162.7	1174.8	1223.9	880.0	-3.72	15.20
JUBLFOOD	590.9	589.6	583.3	587.1	593.4	595.8	796.8	565.0	-1.58	-10.07
KALYANKJIL	490.1	489.9	481.9	486.0	494.0	498.0	795.4	399.4	-4.99	-32.57
KEI	4185.1	4169.8	4084.0	4134.5	4220.3	4255.6	4706.0	2424.0	5.05	-3.57
KOTAKBANK	2135.4	2134.6	2109.3	2122.3	2147.6	2159.9	2301.9	1723.8	1.04	22.03
KPITTECH	1269.8	1270.2	1241.3	1255.6	1284.5	1299.1	1563.4	1020.6	9.09	-11.25
LICHSGFIN	547.0	547.6	541.1	544.0	550.5	554.1	648.9	483.7	-4.97	-13.91
LICI	876.7	874.2	865.2	870.9	880.0	883.3	1007.8	715.3	-4.70	-9.60
LODHA	1109.5	1107.7	1081.3	1095.4	1121.8	1134.1	1531.0	1035.2	-10.17	-14.41
LT	3983.6	3984.8	3937.3	3960.5	4008.0	4032.3	4140.0	2965.3	0.08	5.19
LTF	300.5	301.4	295.9	298.2	303.7	306.9	315.4	129.2	7.42	106.32
LTIM	6266.0	6238.2	6107.7	6186.8	6317.3	6368.7	6768.0	3802.0	9.84	1.61
LUPIN	2092.0	2084.5	2055.6	2073.8	2102.7	2113.4	2402.9	1795.2	5.45	0.50
M&M	3671.6	3656.7	3598.7	3635.1	3693.1	3714.7	3795.0	2425.0	3.46	21.28
M&MFIN	347.0	348.7	337.0	342.0	353.7	360.4	387.0	231.0	-84.62	21.63
MANKIND	2206.3	2207.7	2181.1	2193.7	2220.3	2234.3	3054.8	2115.1	-8.05	-13.78
MARICO	714.7	712.5	704.2	709.4	717.7	720.8	765.3	577.9	-1.05	11.37
MARUTI	15994.0	16005.3	15757.3	15875.7	16123.7	16253.3	16660.0	10725.0	2.19	41.80
MAXHEALTH	1083.9	1081.3	1061.4	1072.7	1092.6	1101.2	1314.3	940.1	-5.41	4.79
MAZDOCK	2641.2	2628.7	2543.7	2592.5	2677.5	2713.7	3775.0	1918.1	-3.91	-43.86
MFSL	1689.4	1677.0	1631.7	1660.6	1705.9	1722.3	1751.4	950.0	8.30	47.89
MOTHERSON	117.6	117.4	115.7	116.6	118.3	119.0	119.6	71.5	11.36	-29.27
MOTILALOFS	916.2	919.6	901.0	908.6	927.2	938.1	1097.1	513.0	-9.19	-4.04
MPHASIS	2908.4	2902.2	2834.1	2871.2	2939.3	2970.3	3238.0	2044.6	4.46	-3.66
MRF	153625	153118	150858	152242	154502	155378	163600	102124	-2.99	22.33
MUTHOOTFIN	3702.0	3722.9	3632.7	3667.4	3757.6	3813.1	3833.0	1922.6	16.03	91.54
NATIONALUM	269.3	268.9	265.9	267.6	270.6	271.9	271.9	137.8	12.82	9.07
NAUKRI	1396.2	1389.5	1359.8	1378.0	1407.7	1419.2	1825.8	1157.0	2.69	-83.52
NESTLEIND	1242.4	1240.2	1228.4	1235.4	1247.2	1252.0	1311.6	1055.0	-1.92	-45.07
NHPC	76.9	77.0	76.2	76.5	77.3	77.8	92.3	71.0	-9.89	-6.21
NMDC	76.0	76.3	75.0	75.5	76.8	77.6	82.8	59.5	0.07	-67.77
NTPC	323.0	322.8	319.6	321.3	324.5	326.0	375.2	292.8	-3.65	-12.11
NTPCGREEN	91.2	91.4	90.1	90.6	91.9	92.7	155.4	84.6	-11.48	-35.84
NYKAA	255.5	256.3	252.2	253.9	258.0	260.4	273.2	154.9	2.17	48.65
OBEROIRLTY	1663.7	1656.6	1611.7	1637.7	1682.6	1701.5	2343.7	1452.0	-7.96	-19.25
OFSS	8191.5	8158.3	7991.8	8091.7	8258.2	8324.8	13220.0	7038.0	-2.56	-34.60
OIL	408.2	409.0	404.3	406.2	410.9	413.7	503.0	325.0	-6.60	-16.76
ONGC	242.2	241.5	238.5	240.4	243.4	244.6	273.5	205.0	-5.95	-7.67
PAGEIND	37505.0	37473.3	36888.3	37196.7	37781.7	38058.3	50590.0	36785.0	-7.99	-18.72
PATANJALI	528.8	536.0	498.7	513.7	551.1	573.4	670.3	521.0	-8.54	-71.68
PAYTM	1328.6	1332.2	1304.2	1316.4	1344.4	1360.2	1381.8	651.5	4.22	47.20
PERSISTENT	6452.0	6438.2	6243.7	6347.8	6542.3	6632.7	6788.9	4149.0	8.78	6.80
PFC	352.1	352.4	348.4	350.2	354.3	356.5	523.9	350.6	-12.73	-29.75
PHOENIXLTD	1734.1	1729.6	1706.2	1720.1	1743.5	1753.0	1902.0	1402.5	-0.71	-0.65
PIDILITIND	1484.7	1482.4	1471.0	1477.9	1489.3	1493.8	1620.0	1311.1	1.66	-52.85
PIIND	3409.7	3398.9	3352.0	3380.8	3427.7	3445.8	4330.0	2951.1	-7.48	-17.60
PNB	119.5	119.7	117.7	118.6	120.6	121.7	127.8	85.5	-3.23	10.71

NSE 200 SUPPORT & RESISTANCE

SYMBOL	CLOSE	PIVOT	SUPT 2	SUPT 1	RESI 1	RESI 2	52 W H	52 W L	30 D % CHG	365 D % CHG
POLICYBZR	1854.3	1861.1	1812.1	1833.2	1882.2	1910.1	2246.9	1311.4	2.44	-3.74
POLYCAB	7348.5	7321.3	7171.8	7260.2	7409.7	7470.8	7903.0	4555.0	-3.65	-0.86
POWERGRID	269.1	268.3	263.7	266.4	271.0	272.9	336.3	247.3	-6.56	-18.37
POWERINDIA	20085.0	20630.0	18825.0	19455.0	21260.0	22435.0	22840.0	8801.0	12.09	64.35
PREMIERENE	942.0	949.4	913.3	927.6	963.7	985.5	1388.0	774.1	-11.63	-22.46
PRESTIGE	1659.2	1651.9	1614.1	1636.6	1674.4	1689.7	1900.0	1048.1	-6.82	-3.77
RECLTD	352.8	352.5	348.0	350.4	354.9	357.0	573.3	348.6	-6.98	-34.64
RELIANCE	1535.6	1537.9	1495.0	1515.3	1558.2	1580.8	1581.3	1114.9	3.43	16.04
RVNL	312.4	313.2	307.5	309.9	315.6	318.9	501.8	301.6	-4.96	-28.64
SAIL	132.1	132.7	130.1	131.1	133.7	135.3	145.9	99.2	-4.23	7.61
SBICARD	855.9	861.6	840.5	848.2	869.3	882.7	1027.3	663.1	-3.56	21.51
SBILIFE	2002.9	1990.3	1940.3	1971.6	2021.6	2040.3	2086.6	1372.6	1.69	39.00
SBIN	948.1	948.4	940.3	944.2	952.3	956.5	999.0	680.0	-0.17	11.03
SHREECEM	26450.0	26373.3	26063.3	26256.7	26566.7	26683.3	32490.0	24817.8	-5.45	-2.61
SHRIRAMFIN	828.2	828.4	813.4	820.8	835.8	843.4	872.0	493.4	3.98	-73.76
SIEMENS	3362.5	3350.2	3288.2	3325.3	3387.3	3412.2	8036.0	2450.0	7.51	-56.51
SOLARINDS	12941.0	12877.3	12590.3	12765.7	13052.7	13164.3	17820.0	8482.5	-8.62	23.49
SONACOMS	499.7	498.7	485.6	492.6	505.8	511.9	697.5	380.0	3.82	-25.72
SRF	2840.1	2834.8	2801.1	2820.6	2854.3	2868.5	3325.0	2196.9	-4.31	22.88
SUNPHARMA	1818.3	1813.3	1788.4	1803.3	1828.2	1838.2	1910.0	1548.0	6.56	1.01
SUPREMEIND	3341.1	3323.7	3263.7	3302.4	3362.4	3383.7	5156.8	3095.0	-14.97	-29.85
SUZLON	50.9	51.4	49.2	50.0	52.3	53.7	74.3	46.2	-14.16	-22.25
SWIGGY	401.6	402.1	393.6	397.6	406.1	410.6	617.3	297.0	-0.22	-19.99
TATACOMM	1846.8	1849.0	1811.3	1829.0	1866.7	1886.7	2004.0	1291.0	-2.85	2.15
TATACONSUM	1148.4	1146.5	1129.6	1139.0	1155.9	1163.4	1202.8	882.9	-4.10	20.25
TATAELXSI	5216.5	5215.0	5127.5	5172.0	5259.5	5302.5	7474.0	4700.0	-4.00	-26.51
TATAPOWER	384.5	384.4	379.6	382.0	386.9	389.3	447.7	326.4	-5.91	-10.29
TATASTEEL	166.8	167.0	165.2	166.0	167.8	168.8	186.9	122.6	-8.70	13.81
TATATECH	674.5	674.9	666.9	670.7	678.7	682.9	973.9	597.0	-3.13	-29.48
TCS	3229.2	3222.2	3159.6	3194.4	3257.0	3284.8	4494.9	2866.6	7.04	-24.95
TECHM	1562.3	1560.4	1523.6	1543.0	1579.8	1597.2	1807.7	1209.4	10.04	-10.70
TIINDIA	2703.6	2713.0	2663.3	2683.4	2733.1	2762.7	3825.0	2407.1	-11.26	-25.32
TITAN	3800.4	3802.8	3750.8	3775.6	3827.6	3854.8	3956.0	2925.0	2.04	14.03
TMPV	356.5	356.8	351.6	354.0	359.2	362.0	820.4	352.0	-14.52	-
TORNTPHARM	3795.7	3774.5	3686.6	3741.2	3829.1	3862.4	3882.2	2886.5	4.61	12.86
TORNTPOWER	1299.7	1298.6	1272.9	1286.3	1312.0	1324.3	1719.9	1188.0	-3.35	-23.05
TRENT	4215.8	4203.9	4130.2	4173.0	4246.7	4277.6	7493.1	4158.0	-10.56	-38.38
TVSMOTOR	3646.4	3648.3	3596.8	3621.6	3673.1	3699.8	3720.0	2171.4	3.87	42.65
ULTRACEMCO	11608.0	11587.7	11480.7	11544.3	11651.3	11694.7	13097.0	10047.9	-2.86	-2.06
UNIONBANK	152.4	152.0	148.8	150.6	153.8	155.1	160.2	100.8	1.03	20.92
UNITDSPR	1431.9	1428.2	1406.2	1419.0	1441.0	1450.2	1700.0	1271.1	-1.08	-7.20
UPL	756.5	753.6	739.9	748.2	761.9	767.3	776.0	493.0	3.54	34.34
VBL	479.9	481.6	466.8	473.4	488.2	496.4	663.6	419.6	1.08	-22.73
VEDL	529.7	533.6	518.9	524.3	539.0	548.4	543.0	363.0	3.25	13.09
VMM	133.8	133.6	132.0	132.9	134.5	135.2	157.6	96.0	-5.97	-
VOLTAS	1329.4	1332.8	1315.0	1322.2	1340.0	1350.6	1859.4	1135.0	-2.66	-21.25
WAAREENER	2984.3	3022.4	2869.4	2926.9	3079.9	3175.4	3865.0	1863.0	-12.99	10.65
WIPRO	256.9	257.1	253.8	255.4	258.7	260.4	324.6	228.0	6.83	-11.90
YESBANK	22.8	22.7	22.0	22.4	23.0	23.3	24.3	16.0	-0.91	9.21
ZYDUSLIFE	935.8	937.5	925.9	930.8	942.4	949.1	1059.1	795.0	-4.62	-4.72

Disclosure & Disclaimer :

HDFC Securities Limited (HSL) is a SEBI Registered Research Analyst having registration no. INH000002475.

This report has been prepared by HDFC Securities Ltd and is solely for information of the recipient only. The report must not be used as a singular basis of any investment decision. The views herein are of a general nature and do not consider the risk appetite or the particular circumstances of an individual investor; readers are requested to take professional advice before investing. "This report may have been refined using AI tools to enhance clarity and readability."

Nothing in this document should be construed as investment advice. Each recipient of this document should make such investigations as they deem necessary to arrive at an independent evaluation of an investment in securities of the companies referred to in this document (including merits and risks) and should consult their own advisors to determine merits and risks of such investment. The information and opinions contained herein have been compiled or arrived at, based upon information obtained in good faith from sources believed to be reliable. Such information has not been independently verified and no guaranty, representation of warranty, express or implied, is made as to its accuracy, completeness or correctness. All such information and opinions are subject to change without notice. Descriptions of any company or companies or their securities mentioned herein are not intended to be complete. HSL is not obliged to update this report for such changes. HSL has the right to make changes and modifications at any time.

This report is not directed to, or intended for display, downloading, printing, reproducing or for distribution to or use by, any person or entity who is a citizen or resident or located in any locality, state, country or other jurisdiction where such distribution, publication, reproduction, availability or use would be contrary to law or regulation or what would subject HSL or its affiliates to any registration or licensing requirement within such jurisdiction.

If this report is inadvertently sent or has reached any person in such country, especially, United States of America, the same should be ignored and brought to the attention of the sender. This document may not be reproduced, distributed or published in whole or in part, directly or indirectly, for any purposes or in any manner.

Foreign currencies denominated securities, wherever mentioned, are subject to exchange rate fluctuations, which could have an adverse effect on their value or price, or the income derived from them. In addition, investors in securities such as ADRs, the values of which are influenced by foreign currencies effectively assume currency risk. It should not be considered to be taken as an offer to

sell or a solicitation to buy any security.

This document is not, and should not, be construed as an offer or solicitation of an offer, to buy or sell any securities or other financial instruments. This report should not be construed as an invitation or solicitation to do business with HSL. HSL may from time to time solicit from, or perform broking, or other services for, any company mentioned in this mail and/or its attachments.

HSL and its affiliated company(ies), their directors and employees may; (a) from time to time, have a long or short position in, and buy or sell the securities of the company(ies) mentioned herein or (b) be engaged in any other transaction involving such securities and earn brokerage or other compensation or act as a market maker in the financial instruments of the company(ies) discussed herein or act as an advisor or lender/borrower to such company(ies) or may have any other potential conflict of interests with respect to any recommendation and other related information and opinions.

HSL, its directors, analysts or employees do not take any responsibility, financial or otherwise, of the losses or the damages sustained due to the investments made or any action taken on basis of this report, including but not restricted to, fluctuation in the prices of shares and bonds, changes in the currency rates, diminution in the NAVs, reduction in the dividend or income, etc.

HSL and other group companies, its directors, associates, employees may have various positions in any of the stocks, securities and financial instruments dealt in the report, or may make sell or purchase or other deals in these securities from time to time or may deal in other securities of the companies / organizations described in this report. As regards the associates of HSL please refer the website.

HSL or its associates might have managed or co-managed public offering of securities for the subject company or might have been mandated by the subject company for any other assignment in the past twelve months.

Please note that HDFC Securities has a proprietary trading desk. This desk maintains an arm's length distance with the Research team and all its activities are segregated from Research activities. The proprietary desk operates independently, potentially leading to investment decisions that may deviate from research views.

HSL or its associates might have received any compensation from the companies mentioned in the report during the period preceding twelve months from the date of this report for services in respect of managing or co-managing public offerings, corporate finance, investment banking or merchant banking, brokerage services or other advisory service in a merger or specific transaction in the normal course of business.

HSL or its analysts did not receive any compensation or other benefits from the companies mentioned in the report or third party in connection with preparation of the research report. Accordingly, neither HSL nor Research Analysts have any material conflict of interest at the time of publication of this report. Compensation of our Research Analysts is not based on any specific merchant banking, investment banking or brokerage service transactions. HSL may have issued other reports that are inconsistent with and reach different conclusion from the information presented in this report.

Research entity has not been engaged in market making activity for the subject company. Research analyst has not served as an officer, director or employee of the subject company. We have not received any compensation/benefits from the subject company or third party in connection with the Research Report.

HDFC securities Limited, I Think Techno Campus, Building - B, "Alpha", Office Floor 8, Near Kanjurmarg Station, Opp. Crompton Greaves, Kanjurmarg (East), Mumbai 400 042 Phone: (022) 3075 3400 Fax: (022) 2496 5066

Compliance Officer: Murli V Karkera Email: complianceofficer@hdfcsec.com Phone: (022) 3045 3600

For grievance redressal contact Customer Care Team Email: customercare@hdfcsec.com Phone: (022) 3901 9400

HDFC Securities Limited, SEBI Reg. No.: NSE, BSE, MSEI, MCX: INZ000186937; AMFI Reg. No. ARN: 13549; PFRDA Reg. No. POP: 11092018; IRDA Corporate Agent License No.: CA0062; SEBI Research Analyst Reg. No.: INH000002475; SEBI Investment Adviser Reg. No.: INA000011538; CIN - U67120MH2000PLC152193

Investment in securities market are subject to market risks. Read all the related documents carefully before investing.

Mutual Funds Investments are subject to market risk. Please read the offer and scheme related documents carefully before investing.

Registration granted by SEBI, membership of BASL (in case of IAs) and certification from NISM in no way guarantee performance of the intermediary or provide any assurance of returns to investors.